

Temperature Indicator **N320**

Specification

Characteristic

- 3,5 digit LED display
- adjustable sensor offset
- MODBUS RTU Protocol
- front panel: IP65

Input

- thermistor: NTC 10kΩ@25°C
- RTD: Pt100, Pt1000
- TC: J, K, T

Accuracy

- ±0,6°C: for NTC
- ±0,7°C: for Pt100, Pt1000
- ±3°C: for J, K, T
- * The above parameters stabilize after 15 minutes of operating.

Power supply

230V AC, 24V DC / AC ±10%

Operating conditions

- temperature: 0÷40°C
- humidity: 20÷85% RH non-condensing

Dimensions [mm]

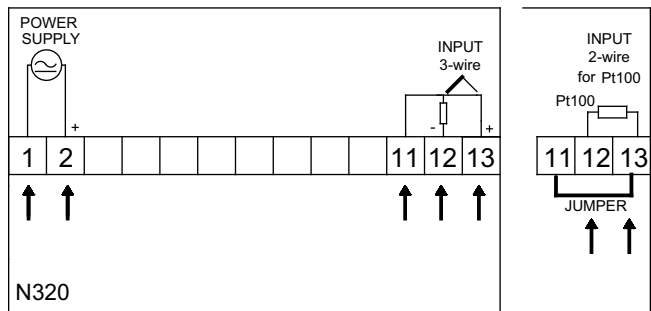
75 × 33 × 75; cut-out 70 × 29

Additional features

- interface RS485



SCHEME OF CONNECTIONS



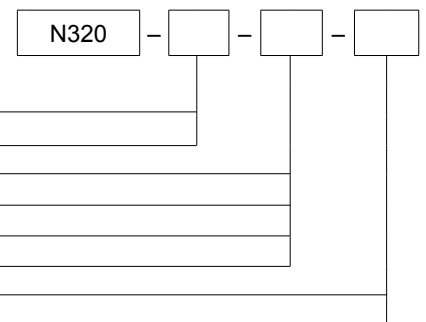
Ordering code

Temperature indicator

Power supply: 90÷250V AC: **4**
 12÷24V AC/DC: **5**

Input: Pt100: **1**
 Pt1000: **2**
 J, K, T: **3**
 NTC: **4**

Communication: without: **0**
 RS485: **1**



Ordering example:

Temperature indicator N320-4-1-0

Indicator **N480i**

Specification

Characteristic

- 4 digit LED display
- sensor offset
- wide range of inputs and ranges

Input

- TC: J, K, T, E, R, S, N
- RTD: Pt100
- current: 4÷20mA
- voltage: 0÷50mV, 0÷10V

Accuracy

- ±0,25% of range ±1°C: for J, K, T, E, N
- ±0,25% of range ±3°C: for S, R
- ±0,2% of range: for Pt100
- ±0,2% of range: for voltage and current inputs

Power supply

230V AC, 24V DC / AC ±10%

Operating conditions

- temperature: 5÷50°C
- humidity: 20÷85% RH non-condensing

Dimensions [mm]

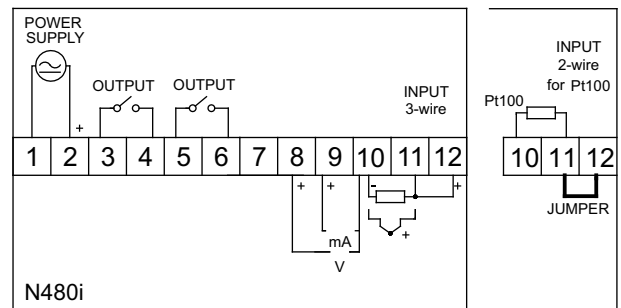
48 × 48 × 110; cut-out 45 × 45

Additional features

- 2 alarm outputs - relay 2x3A/240V AC
- transmitter supply 24V DC - max. 25mA



SCHEME OF CONNECTIONS



Ordering code

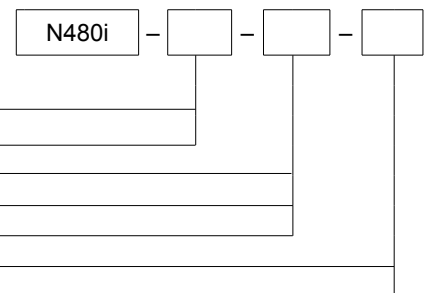
Indicator

Power supply: 90÷250V AC: **4**
 12÷24V AC/DC: **5**

Alarm: without: **0**
 relay: **1**
 2 relays: **2**

Transmitter supply: without: **0**
 Output 24V DC*: **1**

* possible with one alarm relay



Ordering example: **Indicator N480i-4-0-0**

Y

Indicator **N1500**

Specification

Characteristic

- 4 digit LED display
- 4 alarm outputs (two in standard)
- transmitter supply
- 8 types of alarms
- sensor offset

Input

- TC: J, K, T, E, R, S, N
- RTD: Pt100
- current: 4÷20mA, 0÷50mA
- voltage: 0÷5V, 0÷10V

Accuracy

- ±0,25% of range ±1°C: for J, K, T, E, N
- ±0,25% of range ±3°C: for S, R, B
- ±0,2% of range: for Pt100
- ±0,15% of range: for voltage and current input

Power supply

230V AC, 24V DC / AC ±10%

Operating conditions

- temperature: 5÷50°C
- humidity for T≥30°C RH max. = 80%
- T<30 °C RH max. = [80 - (30-T)*3]%

Dimensions [mm]

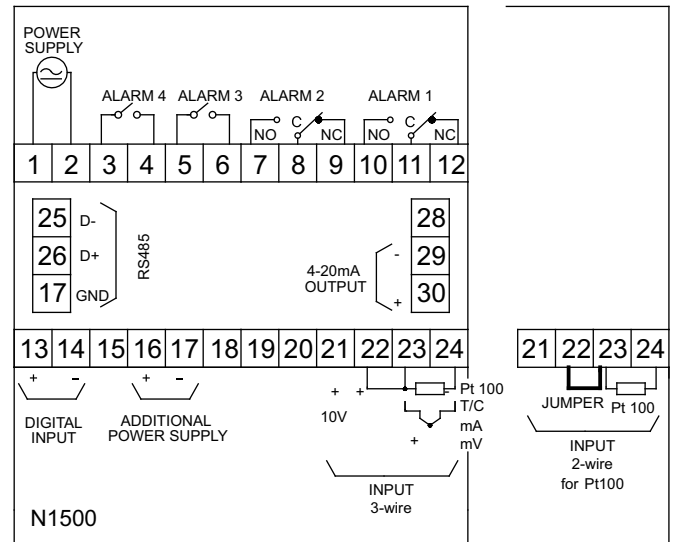
48 × 96 × 92; cut-out 45 × 93

Additional features

- 4 alarm outputs - relay 4x3A/240V AC
- RS485 interface
- current output: 4÷20mA

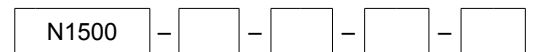


SCHEME OF CONNECTIONS



Ordering code

Indicator



Power supply: 85÷250V AC: **4**
 12÷24V AC/DC: **5**

Alarm: without: **0**
 2 outputs (relay): **2**
 4 outputs (relay): **4**

Output 4÷20mA: **1**

Communication: without: **0**
 RS485: **1**

Ordering example:

Indicator 1500-4-2-0-0